

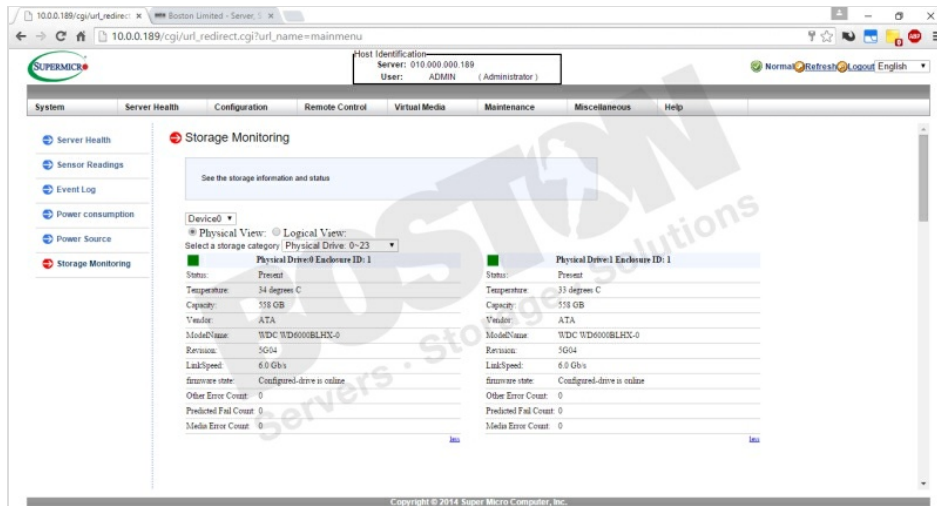
# آشنایی با مفهوم IPMI قسمت سوم روش های ارتباط با IPMI (نسخه چاپی)

## روش های ارتباط با IPMI

برای ارتباط با IPMI روش های مختلفی هست

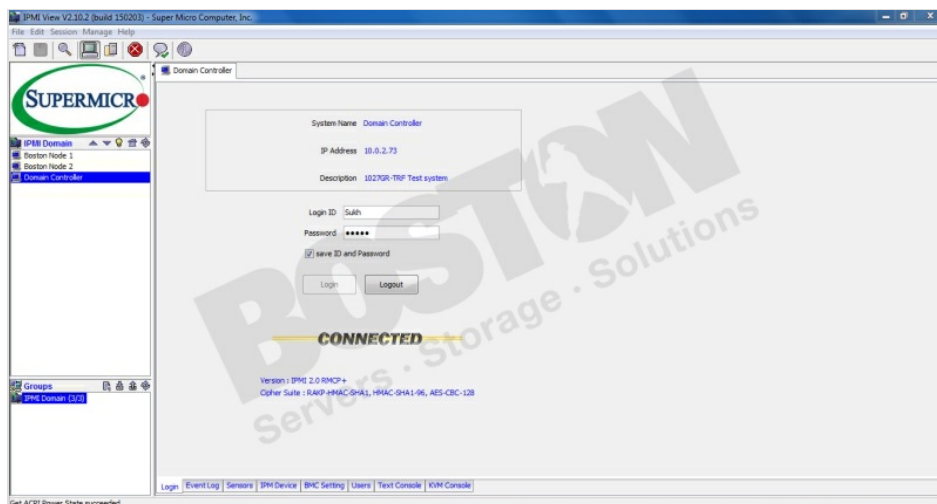
Web Interface-1

با وارد کردن آدرس IP مربوط به ipmi در مرورگر وب میتونیم به ipmi با تمام جزئیات دسترسی داشته باشیم



IPMI View Application-2

با استفاده از نرم افزار IPMI View همیشه به ipmi دسترسی داشت



IPMI Tool cli-3

از این روش برای دسترسی به رابط دستوری سرور استفاده همیشه



```
spd      Print SPD info from remote I2C device
lan      Configure LAN Channels
chassis  Get chassis status and set power state
power    Shortcut to chassis power commands
moent    Send pre-defined events to PE
mc        Management Controller status and global enables
sdr      Print Sensor Data Repository entries and readings
sensor   Print detailed sensor information
fru      Print built-in FRU and scan SPD for FRU locators
gendev   Read/Write Device associated with Generic Device locators sdr
sel      Print System Event Log (SEL)
pef      Configure Platform Event Filtering (PEF)
sol      Configure and connect IPMIv2.0 Serial-over-LAN
tsol     Configure and connect with Open IPMIv1.5 Serial-over-LAN
lso1     Configure IPMIv1.5 Serial-over-LAN
user     Configure Management Controller users
channel  Configure Management Controller channels
session  Print session information
dca1     Data Center Management Interface
sunocm   OEM Commands for Sun servers
kontroncm OEM Commands for Kontron devices
picmg    Run a PICMG-PTCA extended cmd
fwum     Update IPMC using Kontron OEM Firmware Update Manager
firmw11  Configure Firmware Firmware11
dellora  OEM Commands for dell systems
shell    Launch interactive IPMI shell
exec     Run list of commands from file
set      Set runtime variable for shell and exec
hpm      Update HPM components using PICMG HPM.1 file
hpmalizer run FRU-Identifying analyzer using FRU files
fwc      Update Intel Manageability Engine Firmware
```

```
(root@localhost ~)#
```

مطلب اصلی